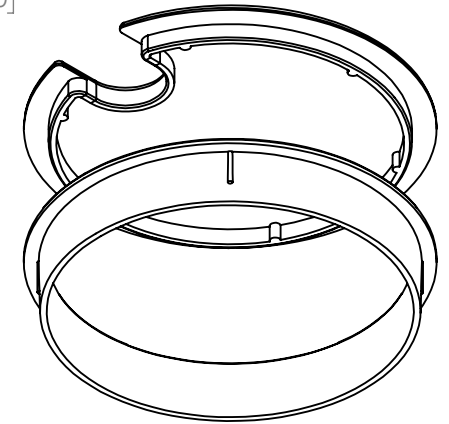
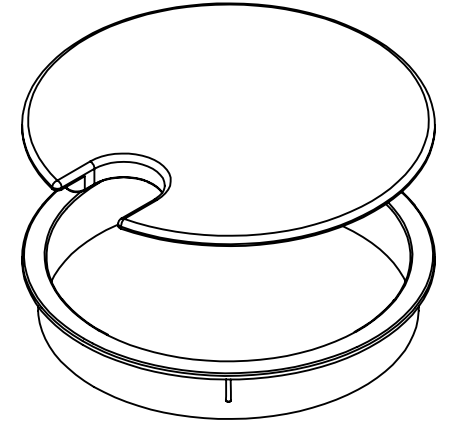
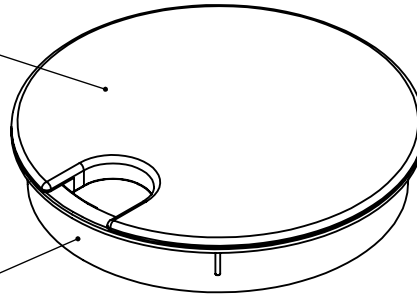


- NOTES:
 1. REFER TO 3D CAD FOR COMPLETE GEOMETRY
 2. BREAK ALL SHARP EDGES

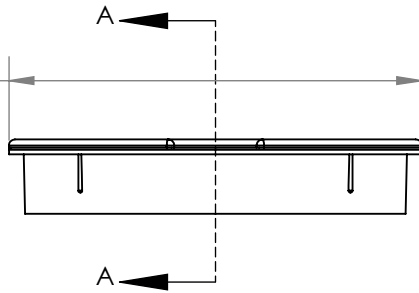
REVISIONS			
REV.	DESCRIPTION	DATE	APPROVED
1	INITIAL CONCEPT	7/1/20	

200221 Body 2 - Rev 5

200221 Body 1 - Rev 3

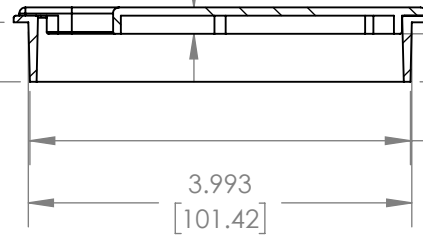


Ø 4.300
[109.22]



.622
[15.80]

.276
[7.01]



.189
[4.80]

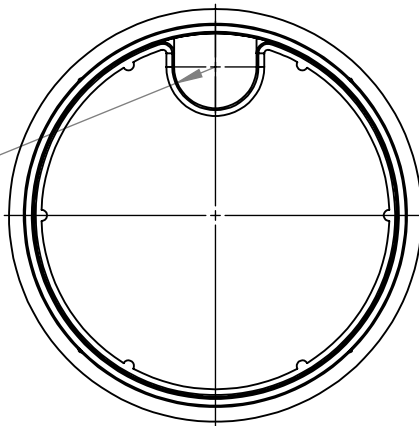
.689
[17.50]

Ø 3.964
[100.69]

3.993
[101.42]

SECTION A-A

R.429
[10.90]




PART FILE NAME: 1040 Rev 1
 REVISION: 1

UNLESS OTHERWISE SPECIFIED:

DIMENSIONS ARE IN INCHES AND MILLIMETERS [MM], TOLERANCES:	DESIGNED	9.1.20	Soderstrom
INCHES	DRAWN	MM/DD/YY	XXXX
MILLIMETERS	CHECKED	MM/DD/YY	N/A
.X : ±0.1 [X] : [±3]	ENG. APPR.	MM/DD/YY	N/A
.XX : ±0.03 [X.X] : [±0.8]	MFG. APPR.	MM/DD/YY	N/A
.XXX : ±0.015 [X.XX] : [±0.38]	Q.A.	MM/DD/YY	N/A
ANGULAR:			
MACHINE: ±0.5°, BEND: ±1.0°			
GEOMETRIC TOLERANCING PER: ASME-Y14.5-94			
MATERIAL: HIPS			
DO NOT SCALE			

DATE	NAME
9.1.20	Soderstrom
MM/DD/YY	XXXX
MM/DD/YY	N/A
MM/DD/YY	N/A
MM/DD/YY	N/A
MM/DD/YY	N/A



BAINBRIDGE MANUFACTURING, INC
 P.O. BOX 487
 WATERVILLE, WA 98858

TITLE:	DRAWING NUMBER:	REV:
Grommet 4"	200221	1
#1040		
SCALE: 1:2	WEIGHT: 43.949 g	SHEET 1 OF 1

PROPRIETARY AND CONFIDENTIAL: THE INFORMATION CONTAINED IN THIS DRAWING IS THE SOLE PROPERTY OF BAINBRIDGE MANUFACTURING, INC. ANY REPRODUCTION IN PART OR AS A WHOLE WITHOUT THE WRITTEN PERMISSION OF BAINBRIDGE MANUFACTURING, INC. IS PROHIBITED.