

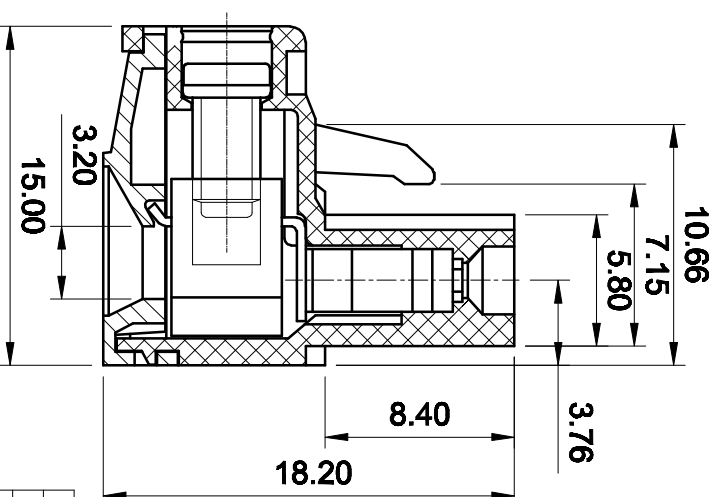
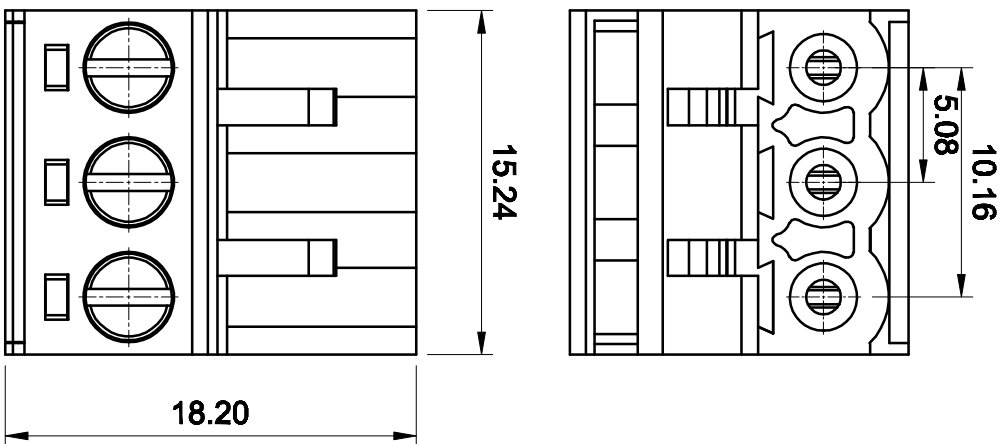
REVISION RECORD			
REV.	CONTENT	MOD.	DATE
1	初始发行		

NOTES:

1. Voltage Rating: 300V, Current Rating: 15A
2. PITCH: 5.08mm
3. Insulation Withstands Voltage: AC2500V/min
4. Insulation Resistance: 5M Ω or more at DC500V
5. Using Temperature Range:-40° C - +105° C
6. Suitable Electric Wire: 28-12AWG
7. Screw Torque Value: 0.5 N.m

技术要求:

1. 额定电压: 300V, 额定电流: 15A
2. 间距: 5.08mm
3. 耐电压值: AC 2500V/min
4. 绝缘阻抗: 5兆欧
5. 使用条件: -40° - +105°
6. 适用线规: 28-12AWG
7. 螺丝拉力: 0.5 N.m



	pitch dimension		Nominal dimension							Tolerance	
	over	to	over	to	over	to	over	to	over		to
variable range	0	6	6	10	0	30	60	100	150		
	to	to	to	to	to	to	to	to	to		
	6	10	24	30	60	100	150				
	±0.1	±0.15	±0.25	±0.2	±0.3	±0.5	±0.7	±1.0			0.05/10

NO.	NAME OF PART	NO. OF PART	Q'TY	MATERIAL	NOTES
1.	LC1-5-08-主体	100144003AV	1	PA66-V0	染色
2.	LC1-5-08-盖子	1001C4003AV	1	PA66-V0	染色
3.	LC1-5-08-螺丝	SP0YA305302Y	3	碳钢	三价铬钝化彩锌
4.	LC1-5-08-铜方块	FLA0BL25083Y	3	黄铜	镀锌
5.	LC1-5-08-夹子	1001D0001AV	3	磷青铜	镀锌

DES.	ARKINE	DATE	18-05-09	UNITS	MM	THIRD ANGLE PROJECTION	SHEET
CHK.		DATE		SIZE	A4		1 of 1
APP.		DATE		SCALE	1:1	DWG NO. SP-1-10010A01	REV. Y0

MY CABLE MART LLC **TITLE** LC1-5-08-3P-140-00A
LC1-5-08-成品