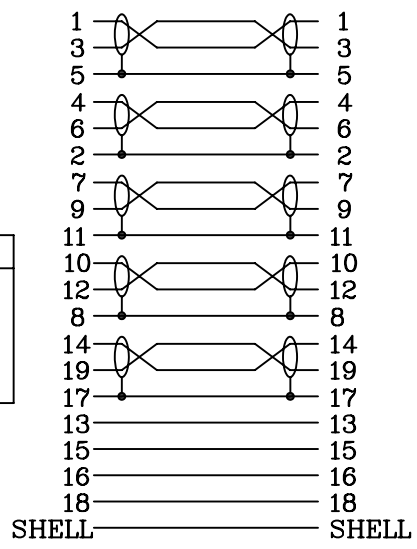
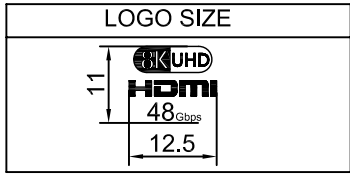


PIN Assignment



Client NO	GC-HHL48-03	GC-HHL48-06
Length	915±20mm(3FT)	1830±30mm(6FT)



NOTES:

1. Test Condition:
 - (1) 100% OPEN & SHORT TEST;
 - (2) Insulation Resistance: DC300V 5MΩ(Min) ;
 - (3) Conductor Resistance: 5Ω/Max.
 - (4) Hi-Pot:DC 300V/0.1s.
2. The product is ROHS compliant.
3. HDTV-DVD TEST:8K@60HZ
4. PASS TDR、EMI、48G。

⑤	OUTER MOLDED	45P Black PVC	g	12	
④	INNER MOLDED	PE	g	8	
③	SHELL	HDMI AM zinc alloy Shell	PCS	2	
②	CON	HDMI 2.1V AM Gold Plated Connector	PCS	2	
①	CABLE	[(30AWG+FPE)*2C+D+AL-foil+Adhesive-PET]*5P+(30AWG+HDPE)*4C+AL+AEB+Black PVC OD6.3mm	PC	1	
NO.	ITEM	DESCRIPTION	UNIT	Q'TY	Notes

		MY CABLE MART LLC			
X.±0.20					
.X±0.15					
.XX±0.10		Drawing No.	JXD-HD1105/G/BK/WA/30AWG/2.1V		
REV	A/O	Title	HDMI AM-AM	Draw	Song
Scale	/	Customer	1-39	Checked	
Page	1/1	Item No.	-	Sales	
Unit	mm	Date	2021/06/07	Approval	